

## CyrusOne Data Center

# Sterling – Shaw, VA

22811 International Drive | Sterling, VA 20116

## 130,000 square feet

**CyrusOne announces its acquisition of a shell building in Sterling, Va, which will be developed into a fully redundant data center facility.**

### Convenient Location

Located at 22811 International Drive, CyrusOne's 130,000 square foot data center built on a 10 acre lot. Designed to CyrusOne's power, cooling, and security standards, the facility offers up to 12.6 Megawatts (MW) of power.

The facility is about 5 miles away from Dulles International airport and 4 miles from CyrusOne Sterling facility.

### Leading-Edge Facility

The Sterling building will feature robust connectivity options with high bandwidth and high-availability circuits, and a number of metro and long-haul networks. The facility will be well suited for Fortune 1000 companies that require robust data center infrastructure for mission-critical applications and want to locate in an area that is generally free from natural disasters.

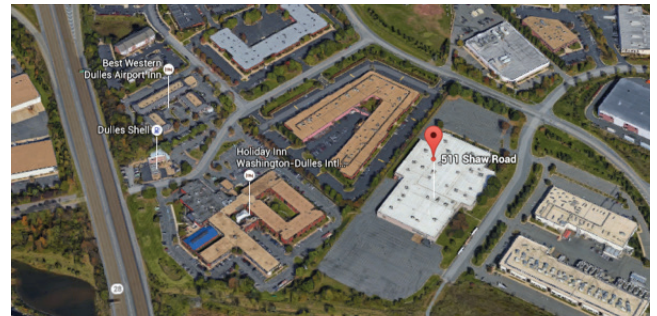
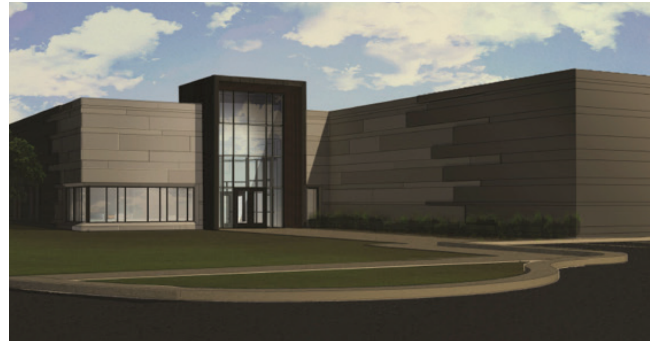
### Key Capabilities

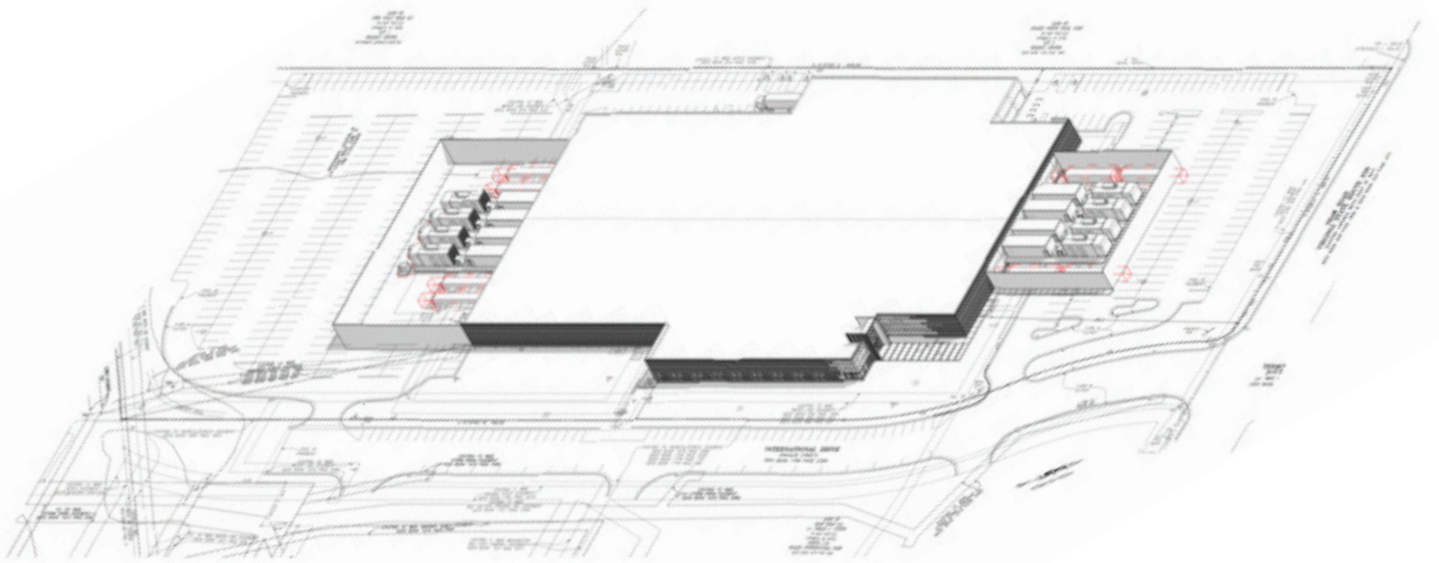
No detail was overlooked in designing and building a data center that meets the needs of today's global businesses. Key capabilities include:

#### High-density configuration.

**Business continuity and disaster recovery.** Expansive office or work area recovery space is customizable to meet unique requirements of our clients for dedicated office suites linked to critical IT operations.

**Mission-critical data center.** The data center's infrastructure combines multiple levels of technology and security, resulting in no single point of failure. The location is ideal for primary production systems backup and the synchronous data replication requirements of mission-critical applications.



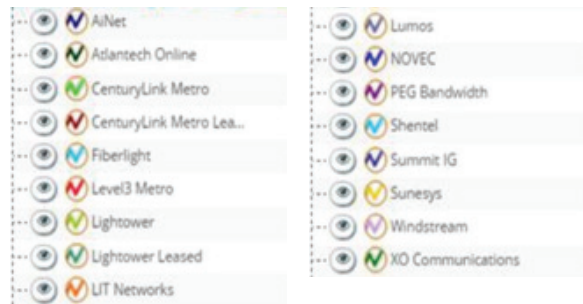
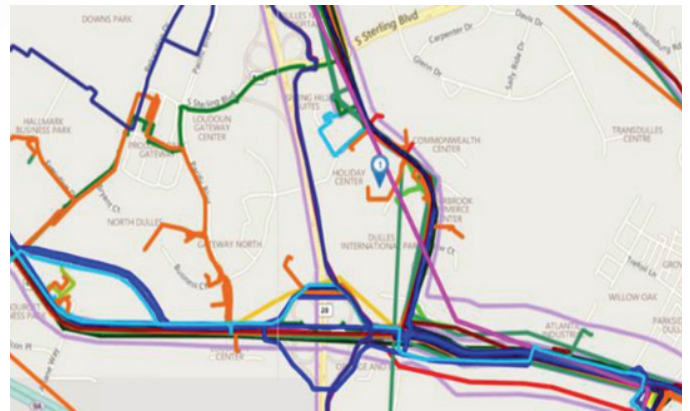


## General

- 128,715 square feet
- 12.6 MW power
- CCTV Camera System 24/7 year-round
- Biometric & Photo Badge Access
- Excellent Fiber Connectivity
- Seismic Zone 1

## Security

- Reinforced physical structure including perimeter fence with sliding entry and exit gates
- Secure entry with man traps and security monitoring area comprised of steel-lined walls for security, and bullet resistant glass
- Video surveillance and recording of the exterior and interior
- On-site security guards 24/7 year-round
- Man traps, biometric and key card (color-coded) security for rigid access control
- Cabinet and cage security options include individual locks and biometric scanners.



## Fire Protection

- Very Early Smoke Detection Apparatus (VESDA) system; sampling air in parts per million coupled with a zonal dual-action interlocking dry-pipe pre-action system

