

Totowa

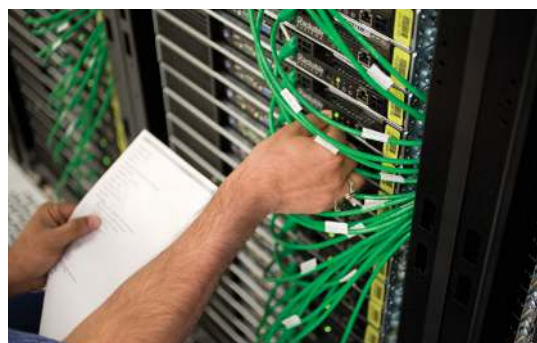
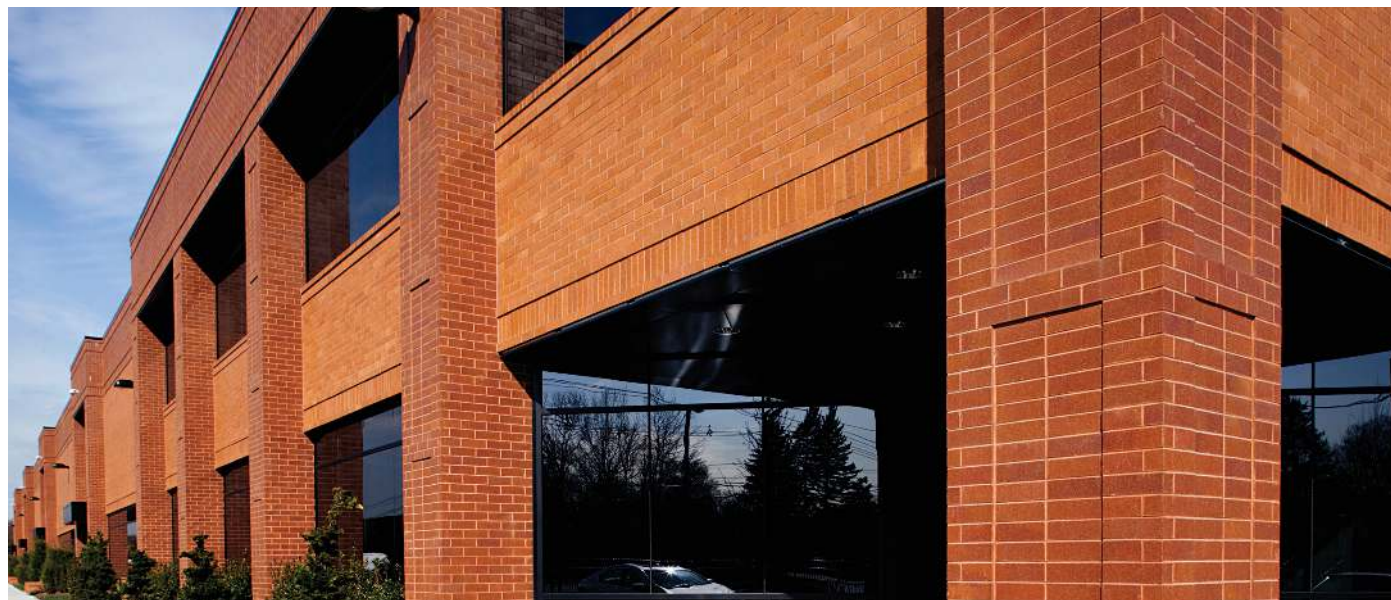
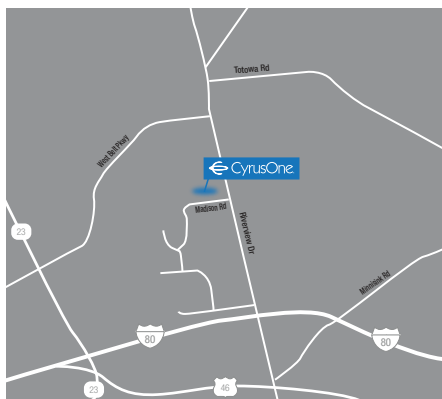
CyrusOne Data Center

50 Madison Road

Totowa, NJ 07512

This enterprise-class facility in Totowa, New Jersey is a 200,000 square-foot facility offering 50,000 colocation square feet (CSF), up to 16 MW of power, and 60,000 square feet of work area recovery. This facility is one of several strategic, mission-critical data centers in the New York Metro area.

Located just 17 miles from Midtown Manhattan, the Totowa, New Jersey data center is ideal for primary production and the synchronous data replication requirements of mission-critical applications. This location provides the power, security, and network operations that support and protect mission-critical data and applications.



Overview

- 200,000 square feet in two buildings
- 50,000 square feet data center space with 36" raised flooring
- 60,000 square feet work area recovery space featuring dedicated office suites configured per customer requirements
- Carrier-neutral facility with two MDF rooms provides dual access to multiple providers for flexible connectivity
- Building and all critical equipment are above 500-year flood zone
- SSAE 18 and PCI compliant

Power

- Designed to deliver 99.999% availability
- 16MW of power
- Designed to support high density configurations
- Two separate feeds from the utility company
- 2N uninterruptible power supply units
- N+1 generator

Cooling

- Power and cooling are delivered under a 36" raised data center floor
- 2,000 tons of N+1 cooling capacity with water cooled centrifugal chillers in plant

Security

- 24/7 year round video surveillance to monitor and control access within the facility
- Biometric access readers
- Advanced proximity card readers
- Motion sensors
- Surrounding security corridor
- Central security office monitors all systems
- 24/7 year round bonded security staff
- K4 rated property perimeter fence

Fire Protection

- Very early smoke detection apparatus (VESDA) system; sampling air in parts per million coupled with a zone-based dual-action interlocking dry-pipe pre-action system
- Double-interlocking pre-action sprinkler present throughout entire building

Location/Amenities

- Close to I-80, Route 46 and the New Jersey Transit RR Station

Certification/ Audit Compliance Accreditations

Through disciplined assessment and audit processes, CyrusOne has implemented comprehensive practices for:

- ISO/IEC 27001
- PCI DSS
- HIPAA/HITECH
- FISMA-High
- SSAE 18 (SOC 1 Type II), Type 2 AT 101/SOC 2
- Business Continuity and Disaster Recovery (BCDR)

Site Plan

