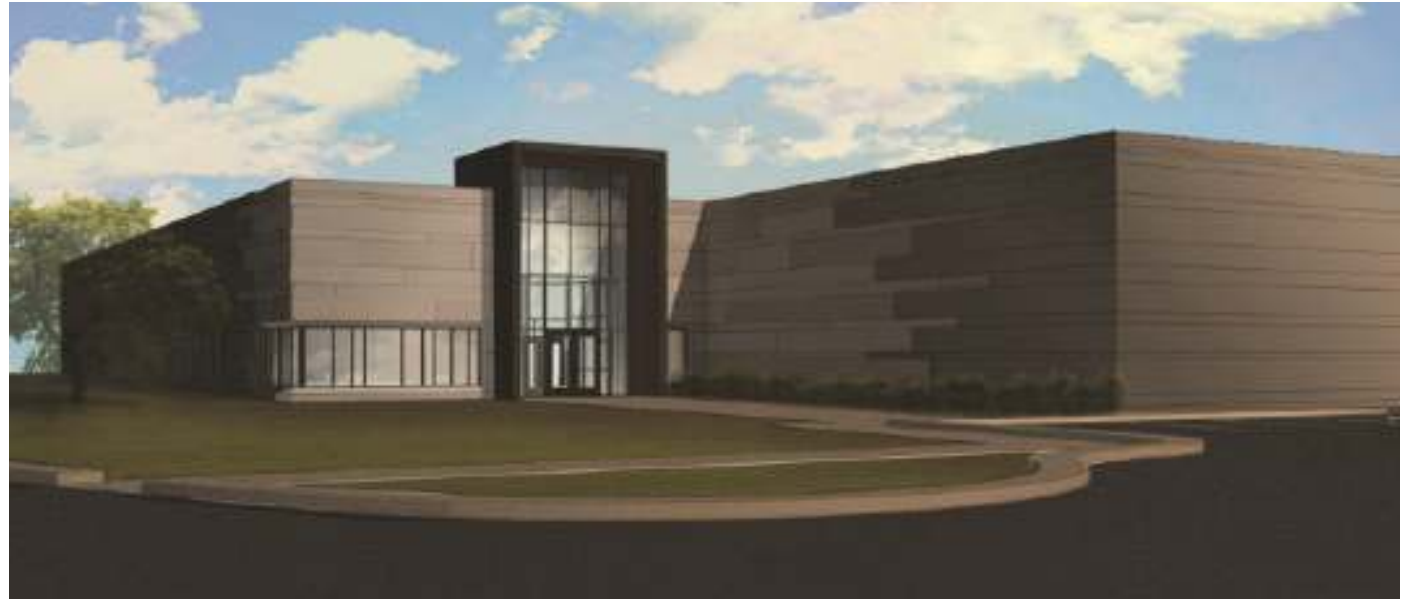


# Sterling IV

**CyrusOne Data Center**  
**22811 International Drive**  
**Sterling, VA 20116**

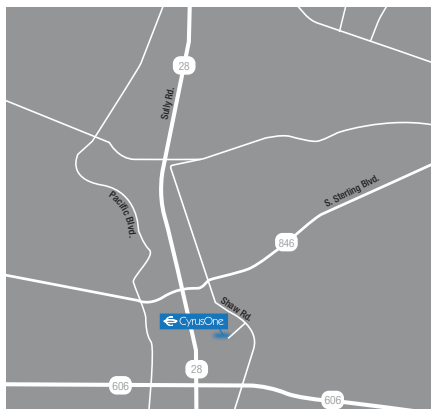
Located at 22811 International Drive, CyrusOne's 130,000 square foot data center built on a 10 acre lot. Designed to CyrusOne's power, cooling, and security standards, the facility offers up to 12.6 Megawatts (MW) of power.

The facility is about 5 miles away from Dulles International airport and 4 miles from CyrusOne Sterling facility.



## Overview

- 128,715 square feet
- 12.6 MW power
- CCTV Camera System 24x7
- Biometric & Photo Badge Access
- Excellent Fiber Connectivity
- Seismic Zone 1



## Power

- Up to 105 MW at full build
- Up to 1000 W per square foot
- Multiple levels of redundancy available within the same footprint (e.g., N, 2N)
- Diverse power delivered by two independent circuits
- 750kVA Mitsubishi UPS systems; each power leg has a dedicated UPS with battery backup
- Scalable 2.25MW Detroit Diesel dedicated generators pre-wired for additional capacity
- 6,800-gallon belly tank per generator

## Cooling

- 36-inch raised white floor design
- 24 foot ceiling height from data center floor, utilizing Stultz 200 Ton CRAH's units with electronically commutated (EC) variable-speed fans
- Highly efficient multiple 500-ton Trane chillers with rapid restart and adaptive controlled microprocessors (with ability to scale as density increases)
- Closed-loop chilled-water-cooling design

## Security

- Video surveillance and recording of the exterior and interior
- On-site security guards 24/7 year-round
- Dual authentication entry into building and data halls; biometric and key card (color-coded) security for rigid access control
- Cabinet and cage security options include individual locks and biometric scanners
- Perimeter fence

## Fire Detection and Suppression

- Very Early Smoke Detection Apparatus (VESDA) system; sampling air in parts per million coupled with a zonal dual-action interlocking dry-pipe pre-action system

## Location/Amenities

- Dulles International Airport – 8 miles
- Washington National Airport – 35 miles
- Various restaurants and hotels nearby

## Site Plan

